

Lebel Audio

PWL & PWL Light



PWL

built for the boom

The PWL is a Phantom 48V mic powering, running on a single AA battery.

The PWL can interface a Ph48 microphone to a standard wireless transmitter, or any equipment that can accept mic level audio, for hours, without any setting.

Main features: *The PWL has a full body machined in aluminium, robust and lightweight.*

The battery can be changed in 3 seconds.

No switch is needed, the PWL starts and stops with the transmitter.

You can work a whole day with a single AA.

A single LED indicates the status of the PWL.

PWL built for the boom



PWL

built for the boom

- Gain: ultra low noise preamp, factory programmable from 0 to +20dB
- Max output level: +6dBu, self noise at -125dBu, dynamic range of 131dB
- Weight: 135g (4.8oz) without battery
- Dimensions: 26x35x124mm (1 x 1,4 x 4,9 in)
- Powering: 8 to 20 hours with 1 AA Panasonic eneloop pro Nimh depending on the microphone needs. Any AA battery can be used.

PWL

built for the boom

Typical operation:

Connect the PWL to the microphone. Connect the PWL to the transmitter, the PWL behave like a standard 2 wires lavalier microphone.

Put a battery into the PWL. Turn on the transmitter. The PWL starts powering the microphone.

Adjust the audio gain on the transmitter.

Let's roll!

PWL

built for the boom



Power LED
the blue led turns
red when battery
voltage falls below
1.05V

TA3 output connector
light and compact

TA3 Wiring

Pin 1 Shield
Pin 2 audio
Pin 3 N.C.



Locking input XLR
for secure mounting
radio frequency shielded

PWL Light

built for the boom

This PWL version regroups both input and output on a single mini XLR, thus eliminating the input XLR.

The specs of the PWL Light are the same as the standard PWL, except for:

- Weight: 82g (2.9oz) *40% lighter (w/o battery)*
- Dimensions: 26x31x92mm *35% shorter (w/o connector)*

PWL Light

built for the boom



PWL Light

built for the boom

Connector: TA5 mini XLR 5 pins



IP63



right angle

TA5 Wiring

- Pin1: shield
- Pin2: shield
- Pin3: audio output
- Pin4: audio input -
- Pin5: audio input +

PWL Light built for the boom

Examples of use:



Alkaline primary: weight 82 + 25g = 107g

6 hours mini



Nimh rechargeable : weight 82g + 30g = 112g

8 hours mini



Lithium primary: weight 82g + 14g = 96g

12 hours mini



Lithium rechargeable: weight 82g + 17g = 99g

6 hours mini

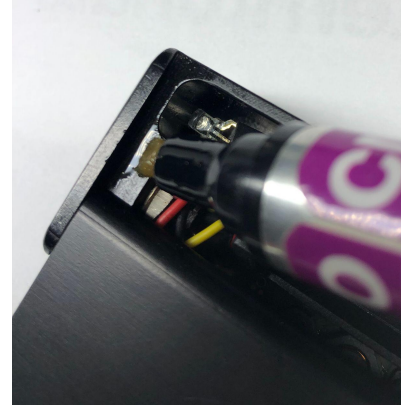
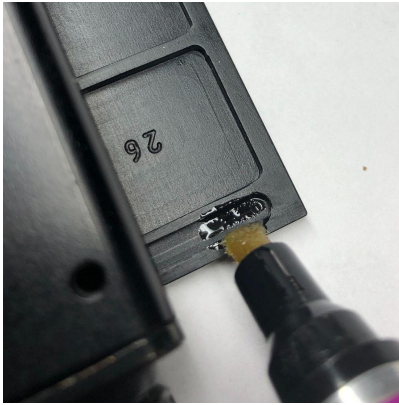
All tests were made with a CMIT Schoeps, 4.4mA @ 48V.

For a KMR 81 Neumann, multiply the time of operation by 2.5 0.9mA@48V.

PWL servicing

Always keep the PWL clean from dirt and dust. It can easily be cleaned with rubbing alcohol.

The PWL may need to be oiled twice a year. Just put a small drop of mineral oil inside the slots of the cover.



PWL servicing

If the PWL cover doesn't open and close easily, you can adjust the two guiding screws. While the cover is half opened, turn the screws with a 1.5mm Allen wrench until they touch the bottom. Then unscrew them about half a turn. The cover should open now easily.

